



**Technical Support Department**  
 Protec house, Churchill way, Nelson, Lancs. BB9 6RT. England.  
 Tel: (01282) 717444  
 E-mail : technical@protec.co.uk

## Number 163

**TO:** ALL Engineers  
 CC – Technical Support Department  
 Projects  
 Sales

**Ref:** Techbul163  
**Date:** 9<sup>th</sup> March 2005

**FROM:** Gawin Davies

**SUBJECT:** 6000 MCP MK2

### 6000 MCP MK2

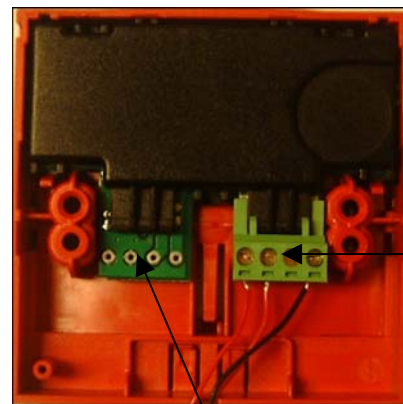
Please be advised the 6000 MCP has been enhanced. This technical bulletin No 163 provides details of the 6000 MCP MK2 device and the procedure for testing and replacing the glass.

The new 6000/MCP MK2 features soft curved styling, and is fully backwards compatible with previous generations of the 6000 MCP, offers a significant reduction in installation time and is full compliant with the latest EN54-11 and BS5839 Part 1:2002 standards.

**Diagram 1.0 – 6000 MK2 MCP (Front)**



**Diagram 2.0 – 6000 MK2 MCP (Rear)**



Removable 4 way Loop termination connector.

**Diagram 3.0 – Connection diagram**

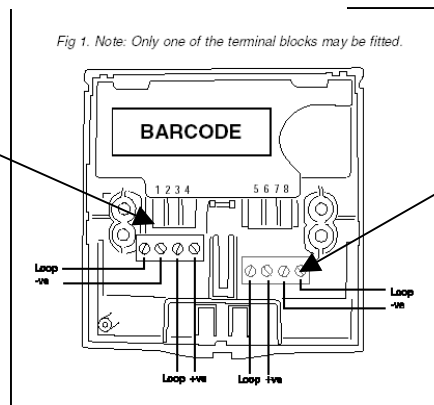


Fig 1. Note: Only one of the terminal blocks may be fitted.

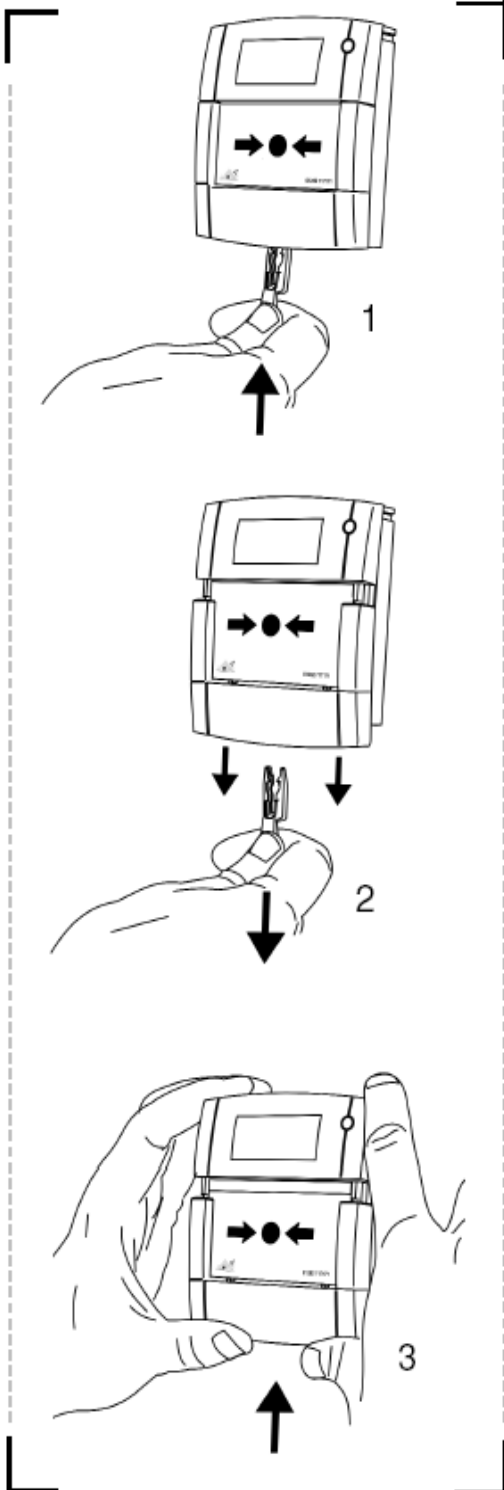
Alternative fixed Loop termination connector (for future use)

Removable 4 way Loop termination connector.

Alternative fixed Loop termination connector (for future use)

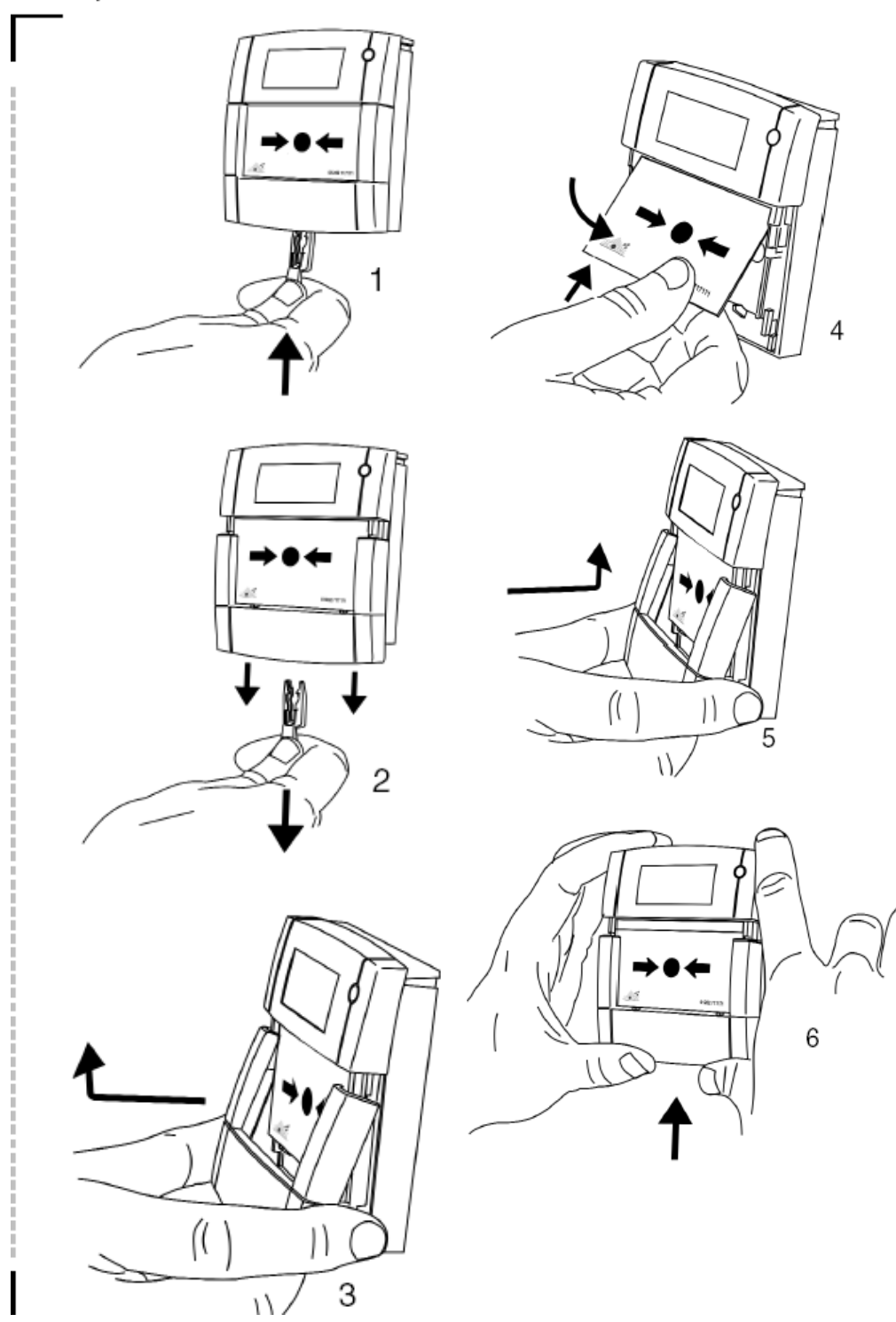
**Diagram 4.0 – Test & Rest**

To Test or Reset



**Diagram 5.0 – Replacing MCP Glass**

To replace Glass / Element





**Technical Support Department**  
 Protec house, Churchill way, Nelson, Lancs. BB9 6RT. England.  
 Tel: (01282) 717444  
 E-mail : technical@protec.co.uk

**Single user tool**

The combined test, reset and lid release facility means only one tool is needed for maintenance. The same tool will also test the existing 6000 call points so you don't need to carry a variety of different keys

**Anti tamper feature**

The new call point, once installed, cannot be tampered with. If the lid of a device is removed without isolation from the panel, the alarm will sound. The lid fixing is also now designed to be more secure. The special MCP tool is needed to release the lid as required in EN54-11.

**Flex-ability**

An MCP break glass can quickly become an EN54-11 resettable MCP. A resettable MCP can easily be converted back to a break glass. With the new design it only takes a change of operating element.

Technical Details	
Quiescent current consumption	450uA
Alarm condition (LED illumination)	3.5mA
Stock Code	6000/MCP
Single user tool kit (stock code)	N29-795-93
Replacement glass (stock code)	
<i>The old style glass will also fit the new MK2 BGK</i>	63-149-60

Should you require any further technical advice regarding this subject, please contact a member of the '**Technical Support Department**' on ext (01282) 717444, who will be pleased to provide you with the necessary advice.

**Gawin Davies**  
 Technical Service Manager



ISO 9001  
 Cert No. FM 10567



QUALITY ASSURED  
 Intruder alarms



Supporting Member



Full Member